

# Hukseflux – heat flux measurement at the next level

*Hukseflux is the global market leader in heat flux measurement. This white paper briefly explains the fundamentals of measuring with heat flux sensors. It also offers general directions what to watch out for and some, perhaps surprising, applications of heat flux sensors. More information? Please contact Hukseflux.*

Heat flux sensors measure energy flux onto or through a surface in  $[W/m^2]$ . The heat may be transported by conduction, radiation or convection. All heat transfer is driven by temperature differences, flowing from a hot source to a cold sink. Convective and conductive heat flux is measured by letting this heat flow through the sensor. Radiative flux is measured using heat flux sensors with black absorbers; the absorber converts radiative to conductive energy. Hukseflux started in 1993 designing heat flux sensors.

Heat flux sensors manufactured by Hukseflux are optimised for the demands of different applications. The most important variables are:

- rated temperature range
- rated heat flux range / with or without cooling
- sensitivity
- response time
- chemical resistance, safety requirements
- size, shape, flexibility and spectral properties

Hukseflux heat flux sensors typically employ thermopiles. Thermopiles generate a signal, as a result of the temperature difference between the hot and cold side of the thermopile. The signal is proportional to the heat flux. Thermopiles are passive sensors; they do not require power. The output is usually a small millivolt signal. Pictures show models SBG01 water-cooled heat flux sensor, IHF01 industrial heat flux sensor, model FHF05-50X50 foil heat flux sensor and our BLK - GLD stickers for the separation of radiation and convection. .



water-cooled heat flux sensor  
for radiative flux



high-temperature all-metal heat flux  
sensor (industrial)



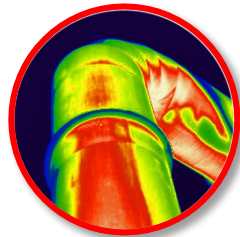
flexible foil heat flux sensor  
(general purpose)



BLK - GLD measuring convective and  
radiative heat flux

# Measurement with a heat flux sensor; what matters most?

On this page, the fundamentals of heat flux measurement are briefly explained. These are general considerations for measuring heat flux.

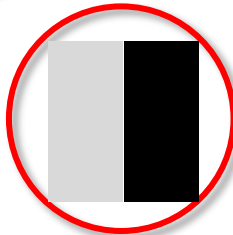
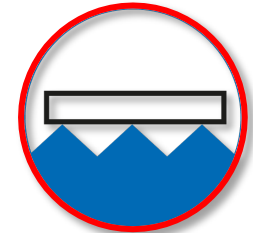


## Representativeness in time and space; average!

A heat flux sensor measures at a certain location. Is this location representative of what you need to measure? If possible, use a relatively large sensor, rather than a small one, and consider use of multiple sensors. Thermal processes often have large time constants; instantaneous measurements may be misleading. Average to get the full picture.

## Thermal contact sensor to heat sink

A small layer of air often forms a major contribution to the thermal resistance. Make sure that there is good thermal contact between sensor and environment or heat sink. Avoid air-gaps. Use double-sided tapes, welded connections, graphite sheets. Use Power strips to fill up gaps. Read our note [how to install a heat flux sensor](#) with tips & tricks.

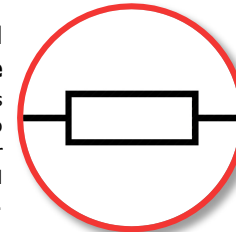


## Optical properties

When heat flux sensors also measure radiation, pay attention to the surface colour. If needed paint the sensor surface. Please mind that shiny metallic surfaces reflect both infra-red and visible radiation. Paints may have different colours in the visible range, but are usually "black" absorbers and at the same time black emitters in the far-infra-red. See our [YouTube video](#) on how to measure radiation and convection separately (2 min).

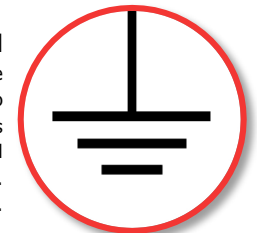
## Sensor thermal resistance

A heat flux sensor distorts the local heat flux. In order to minimise this effect, use the sensor with the lowest possible thermal resistance.



## Noise? Pay attention to signal ground

Signals from thermopiles are small DC voltages in the microvolt range. These are easily distorted. To guarantee immunity to external sources pay attention to grounding and shielding. A good starting point is to make sure that signal wires are well insulated from the environment (no possibility for ground loops) and are well protected against humidity ingress (possibly creating electrical contact). Read our note on [data logger selection guide](#) for more information.

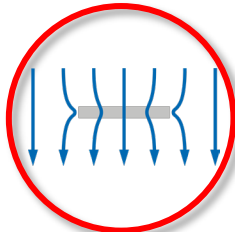
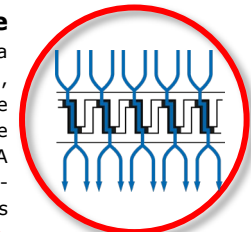


## Absolute temperature

Sensors are calibrated at room temperature  $T_{CAL}$ . Typical temperature dependence is in the order of 0.15 % / K. When working at high or low temperatures  $T$ , ask for the temperature dependence. Typically, this is a linear correction with  $(T - T_{CAL})$ . Self-calibrating sensors may compensate for temperature dependence.

## Micro effects – thermal conductivity dependence

In case the thermopile sensor has direct exposure to the environment, there is a risk of so-called micro effects; on a micro scale (scale of the thermopile grid), the local heat flux gets distorted, and shows a preference to travel through the thermopile. The result is that sensor sensitivity changes as a function of the thermal conductivity of the environment. The calibration is no longer valid. A thermal spreader, for example using a metal cover, is a proven counter-measure. The heat flux then first meets a metal plate and the thermopile always has the same thermal environment. Read our note on [why use spreaders](#).



## Edge effects

A heat flux sensor locally distorts the heat flow pattern, in particular around the edges of the sensor; the heat may have a preference to travel through the sensor rather than through the surrounding material. A passive guard, i.e. a non-sensitive part around the sensor is essential to avoid errors due to edge effects. On a smaller scale, this effect may again play a role: see the text block on micro effects.

# Heat flux sensors in insulation testing

*Hukseflux Thermal Sensors is the global market leader in heat flux measurement. Here are some examples of heat flux sensor application:*



## **In-situ study of LNG tanker insulation**

With HFP03 special design and FHF05 series.



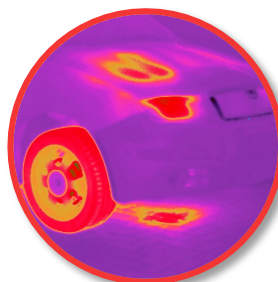
## **Clothing thermal performance**

Analysed with model FHF05-15X30.



## **Heat loss and insulation of industrial installations heat flux**

With IHF01 and IHF02.



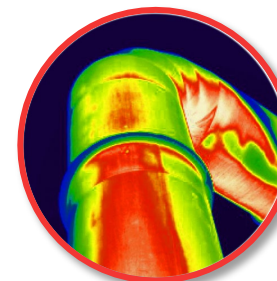
## **Insulation of car parts**

Analysed with model FHF05-50X50.



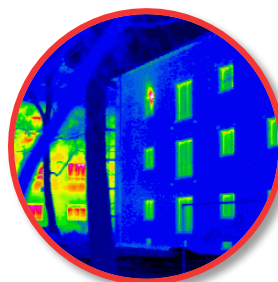
## **In-situ verification of airplane insulation**

With HFP03 and FHF05 series.



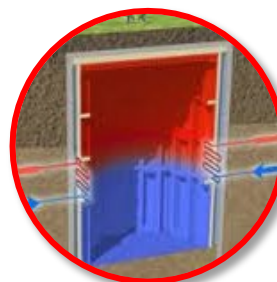
## **Industrial insulation performance**

Analysed with model FHF05-15X85 and IHF sensors.



## **Building envelope thermal resistance**

Measure it with HFP01 and TRSYS20.



## **Solar hot water storage**

Analysis of system performance and heat loss with HFP01 and HFP03.



## **Heat flux / insulation of home appliances**

With HFP01 and model FHF05-85X85.

# Heat flux sensors characterising the thermal environment

*Hukseflux Thermal Sensors is the global market leader in heat flux measurement. Here are some examples of heat flux sensor application:*



## Indoor climate studies

With HFP01 and TCOMSYS.



## Server park thermal management

Analysis of electronics cooling efficiency by airflow with TCOMSYS and FHF05 series.

## Electronics components heat flux measurement

Analysed with FHF05-10X10.



## Human thermal comfort measurement, thermal mannequin

Special equipment made with



## Oven thermal / heat flux profiling

With model FHF05-15X30 or high temperature foil heat flux sensor model FHF06.



## Ground surface energy balance Eddy covariance / Bowen ratio

Soil heat flux measurement in meteorology with HFP01SC.

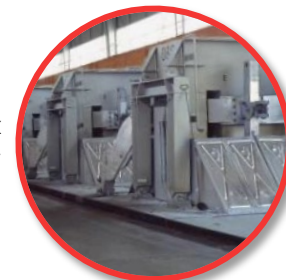


## Microclimate in cars

Thermal climate and human thermal comfort with TCOMSYS.

## Industrial (aluminium reduction cell) heat flux and temperature survey

With IHF01 / IHF02 and ALUSYS, input for modelling reduction process and cell behaviour.



# Heat flux sensors in fire / flammability / high heat flux

*Hukseflux Thermal Sensors is the global market leader in heat flux measurement. Here are some examples of heat flux sensor application:*



## Fire academy / education

Get a better feeling for heat flux levels with SBG01, HF02 and HF03.



## Battery thermal runaway / fire

Study the runaway process and flammability with model FHF05-50X50 and SBG01.



## Cone calorimeter calibration

Calibrate and adjust the heat flux level with water-cooled SBG01.



## Welding torch heat flux measurement

Study heat transfer by flames with HFS01 and GG01.

## Forest fire research

Study heat forest fires with SBG01.



## Determining human and equipment exposure to heat sources

With HF03 + LI19 portable heat flux sensor.

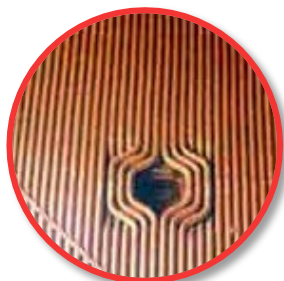
## Full scale fire testing

Study of flame spread with SBG01 on "full scale wooden school building fire test".



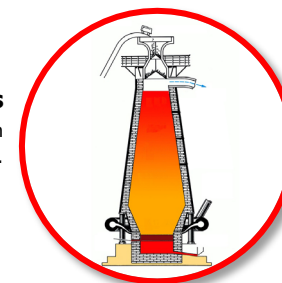
# Heat flux sensors in process monitoring & control

*Hukseflux Thermal Sensors is the global market leader in heat flux measurement. Here are some examples of heat flux sensor application:*



## Boiler water wall fouling

Heat flux sensors may be included on the steam tube surface of boiler tubes! From the trend in heat flux, users can analyse flame position and fouling of the surface. This is done with an adapted IHF01. Data is used for sootblower control / cleaning scheduling.



## Coal fired boilers

Steam pipe heat flux measurement with CBW01.



## Catalytic cracker fouling measurement

Analysed with HF05 and a meteorological station. Input data are used to schedule servicing. Fouling translates in lower heat flux.



## Flare monitoring

Improving safety for equipment and personnel. Issue warnings with HF02.



## Pharmaceutical vial freezing / freeze-drying

Control of freeze drying / verify if sufficient heat is transferred via a surface heat flux measurement.



## Solar concentrator boiler heat flux

Verify the heat flux level, prevent overheating, with a special IHF01 on the boiler pipe.



## Solar radiation heat flux for PV system performance assessment

With pyranometer model SR30.

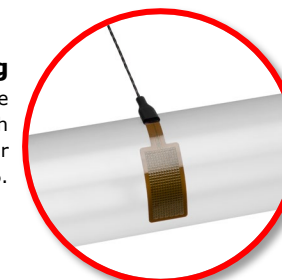
## Ice rink thermal control

Improved with FHF05; thin foil heat flux sensors react faster and have a higher resolution than temperature sensors.



## Resin Transfer molding

Process monitoring of the polymerisation process with high temperature foil heat flux sensor FHF06.



# Heat flux sensors in specialised measurement applications

*Hukseflux Thermal Sensors is the global market leader in heat flux measurement. Here are some examples of heat flux sensor application:*



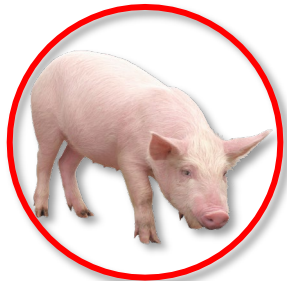
### Solar concentrator heat flux

Water-cooled SBG01 and GG01 to measure heat flux of a solar concentrator.



### Thermal mannequin

Equipped with FHF05-50X50.



### Human and animal metabolism studies

With HFP01 and FHF05-85X85.

### Physics education

Experiments in calorimetry, Stefan-Boltzmann's law of radiation, heat transfer.



### Engine overheating studies

Overheating studies in racecars with FHF05.



### Geothermal heat flux / permafrost melting

Measure at ultra-low heat flux levels with HFP03 or multiple HFP01's.



### Solar simulator / climate testing of cars

Using pyranometer SR30 and heat flux sensor of FHF05 series.

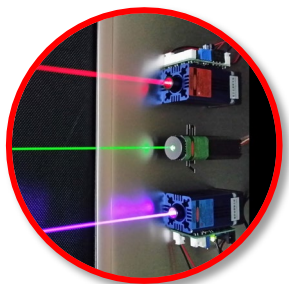
### Performance evaluation of IR heaters and radiant panels

Using FHF05 series with BLK-GLD sticker series or TCOMSYS.



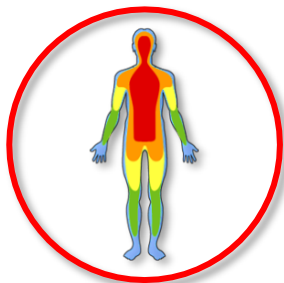
# Heat flux sensors various applications / as OEM component

*Hukseflux Thermal Sensors is the global market leader in heat flux measurement. Here are some examples of heat flux sensor application as a component in measuring equipment made by other manufacturers than Hukseflux.*



## Laser power measurement

With an FHF05-50X50 or high temperature foil heat flux sensor FHF06.



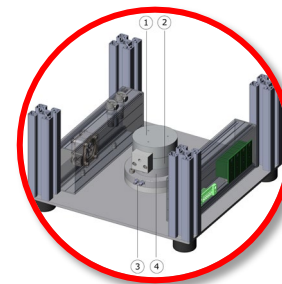
## Body core temperature measurement (zero heat flux temperature measurement)

With FHF05 and FHF05SC series.



## Monitoring and control of freeze drying

With an FHF05 series model and equipped with BLK-GLD



## LED thermal power calorimeter

Designed for the Zhaga consortium; TPL01.



## Heat flow meter apparatus

Thermal conductivity measurement of insulation materials with an FHF05 at its core



## Heat flow reaction calorimeter

With FHF05 series.